

iC-MINI-L series

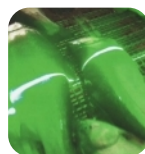
PL.iC-Mlxxx.yy-Lzz

Compact line laser module:

- Homogeneous line distribution
- Wavelengths 405 - 660 nm
- Integrated TEC
- Very compact industrial housing



Applications:



Machine vision

Triangulation setup for high resolution inspection.



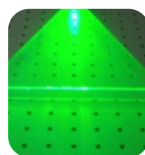
Alignment line projection

Versatile alignment for complete production chain.



Road and railway inspection

Surface inspection with mobile triangulation systems.



Flow visualisation

Measurement of fluid dynamics.

iC-MINI-L series
PL.iC-Mlxxx.yyy-Lzz

OPTICAL				
Available wavelengths *	450 nm	520 nm	638 nm	660 nm
Output power *	70 mW	70 mW	150 mW	20 mW
Line optics fan angle *	15° , 30° , 45° , 60° , 90°			
Line thickness (1/e²) at aperture	< 3.5 mm (collimated)			
Divergence (full angle)	< 1.0 mrad (collimated)			
Power stability	< +/- 1 % (over 2 h)			
ELECTRICAL				
Integrated TEC	Yes			
NTC	10 kOhm at 25° C			
MECHANICAL				
Dimension laser head	60 x 35 x 25 mm³			
Weight laser head	90 g			
ENVIRONMENTAL				
Cooling	via baseplate (must be attached to external heat sink)			
Operating temperature	10 - 35° C			
Warm-up time	< 5 min			
Laser class (EN 60825-1)	3B			

Notes:

All specifications are given at 22°C constant environment temperature.

* Others on request

Ordering code

PL.iC-Ml xxx . yyy - Lzz

Wavelength

Output power

Fan angle

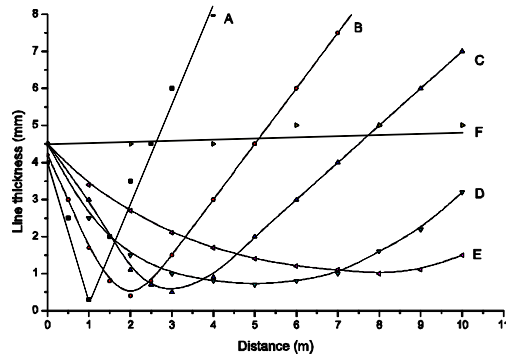
PEGASUS follows a policy of continuous product improvement and reserves the right to change any specifications without notice.

www.pegasus-lasersysteme.de Phone: +49(0)5407-3123-0 Fax: +49(0)5407-3123-6 Email: info@pegasus-lasersysteme.de

iC-MINI-L series PL.iC-Mlxxx.yyy-Lzz

Focusing performance

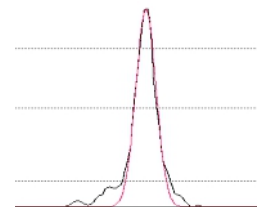
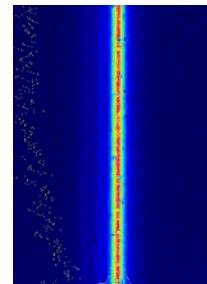
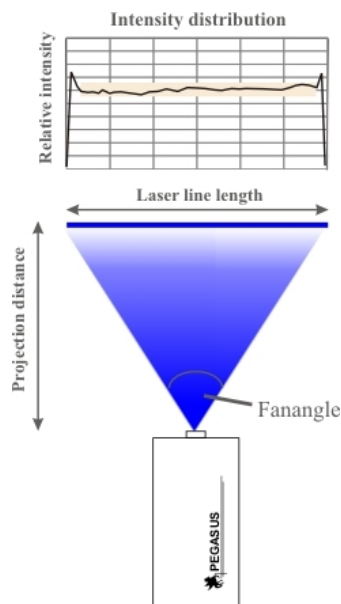
The figure show the typical focusing and depth-of-field performance (at $1/e^2$). The PEGASUS iC-MINI-L series has a fixed focus, adjusted at factory according customers application requirements. The focus can be collimated for a large Rayleigh length that the beam diameter remains nearly constant over a long projection distance



Example measurements of line thickness ($1/e^2$) for different focusing adjustments (curves A - F) for PL.iC-MI450. The data may vary with type of laser diode.

Intensity profile

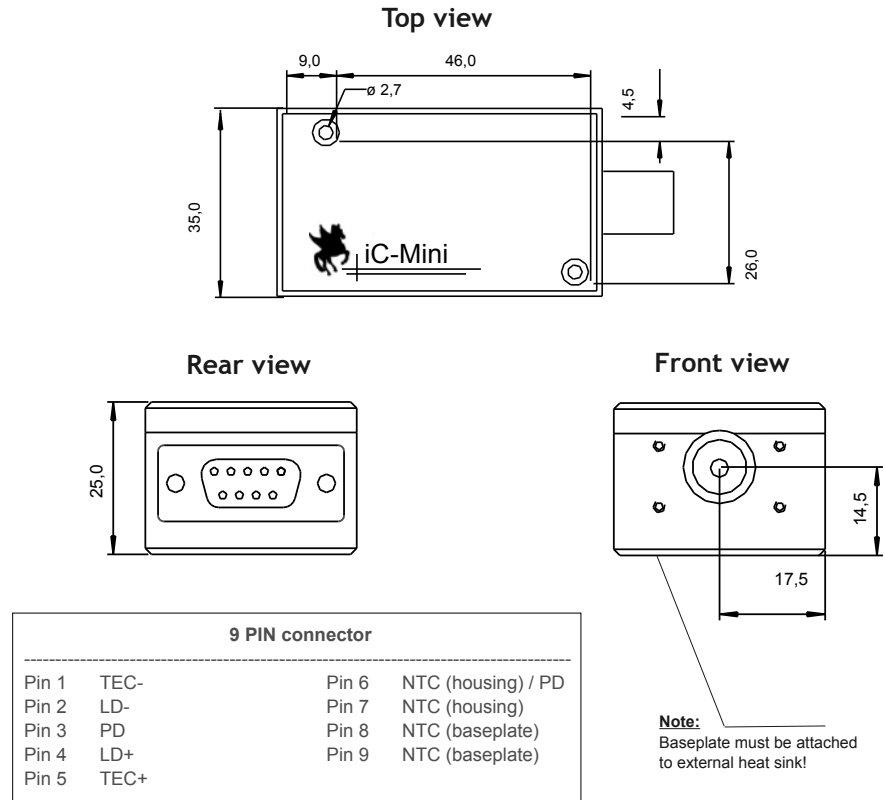
The iC-MINI line laser series is provided with high quality Powell line lens to generate a homogenous intensity distribution along the line, typically < 20 %.



Typical intensity profile.

iC-MINI-L series PL.íC-Mlxxx.yyy-Lzz

Mechanical dimensions



Adapted driver solutions

OEM version

PL.LD.12V-2A-1C1T
12 VDC power supply



Benchtop version

PL.LD.230V-2A-1C1T
230 VAC power supply



PEGASUS follows a policy of continuous product improvement and reserves the right to change any specifications without notice.

All products comply the warranty of 1 year. (2 years on request.)



PEGASUS LASERSYSTEME GMBH
Marie-Curie Strasse 23
D-49134 Wallenhorst
Germany
Phone: +49(0)5407-3123-0 Fax: +49(0)5407-3123-6
Email: info@pegasus-lasersysteme.de

www.pegasus-lasersysteme.de

